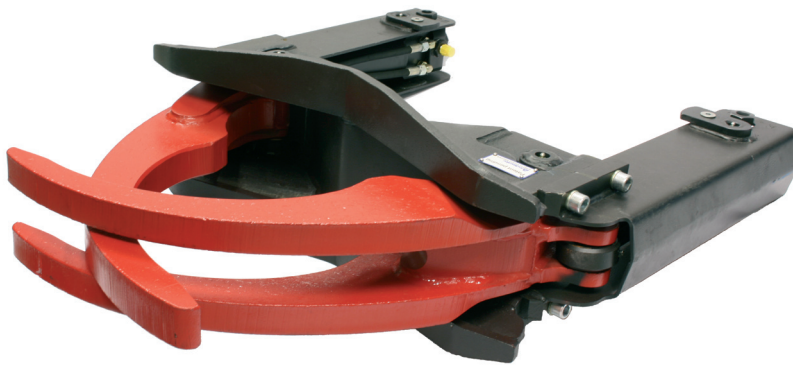




ENG

# GRAPPLE MODULE **G710**

Grapple Module for Rototilt RT 40 and RT 60B



The G710 grapple module is a detachable grab that is easy to assemble and dismantle.

The G710 grapple module's grab cylinders have valves that facilitate the connection of additional hydraulic functions.

A grapple module makes the Rototilt more flexible than ever. It provides a grab function that is always available, regardless of whether or not the bucket is attached.

An effective grabbing tool ideal for straightforward pipe-laying operations, pole erection, paving, scrap handling and much more.

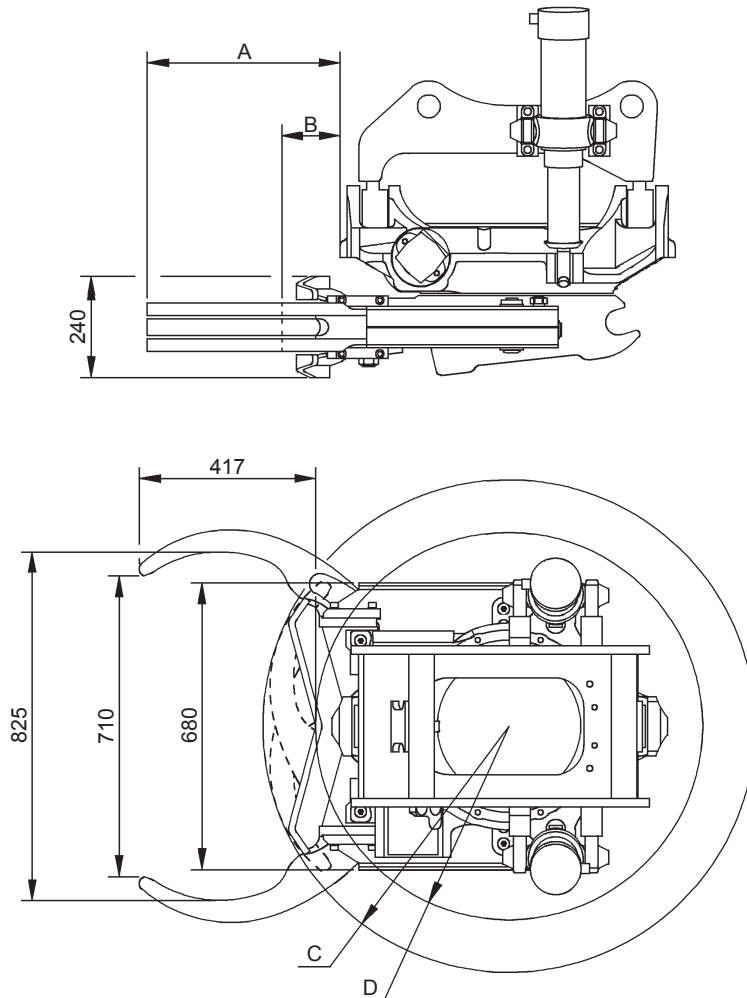
- Easy to assemble and dismantle
- Generous grab width
- Three-finger claws
- Compact, robust and light
- Service-friendly
- Doesn't effect build height
- Well-protected grab cylinders

**ROTOTILT**<sup>®</sup>

 Indexator

# GRAPPLE MODULE

# G710



	A	B	C	D
<b>RT 40-S60</b>	518	208	585	460
<b>RT 40-S1</b>	622	312	684	560
<b>RT 60B-S60</b>	455	145	585	460
<b>RT 60B-S1</b>	556	246	684	560
<b>RT 60B-S1 HD</b>	556	246	684	560

To convert "mm" into "inch" divide by 25,4

The G710 grapple module is an optional device for Rototilt RT 40 and RT 60B.

G710 is compatible with quick couplers of type S1, S1 HD and S60.

- The G710 grapple can easily be added afterwards.
- Pilot-controlled check valves keep the load in place in the event of pressure loss.

## Technical data

Weight, kg (lb)	95 (209,4)
Max. hydraulic pressure, MPa (psi)	25 (3 626)
Grapple force, max. open, kN (lbf)	9 (2 023)
Grapple force, jaw-to-jaw, kN (lbf)	17 (3 822)
Max. lifting capacity, kg (lb)	900 (1 984)

## Grapple module - G710

2008 01 18 1049 725 eng