



ENG

SORTING GRAPPLE

SG1600
SG2000
SG2300

Sorting grapple for heavy-duty grapple work



The sorting grapple is used for heavier grapple work and is totally custom-built for Rototilt.

A Rototilt unit and grapple provide an ideal combination that make your excavator even more versatile.

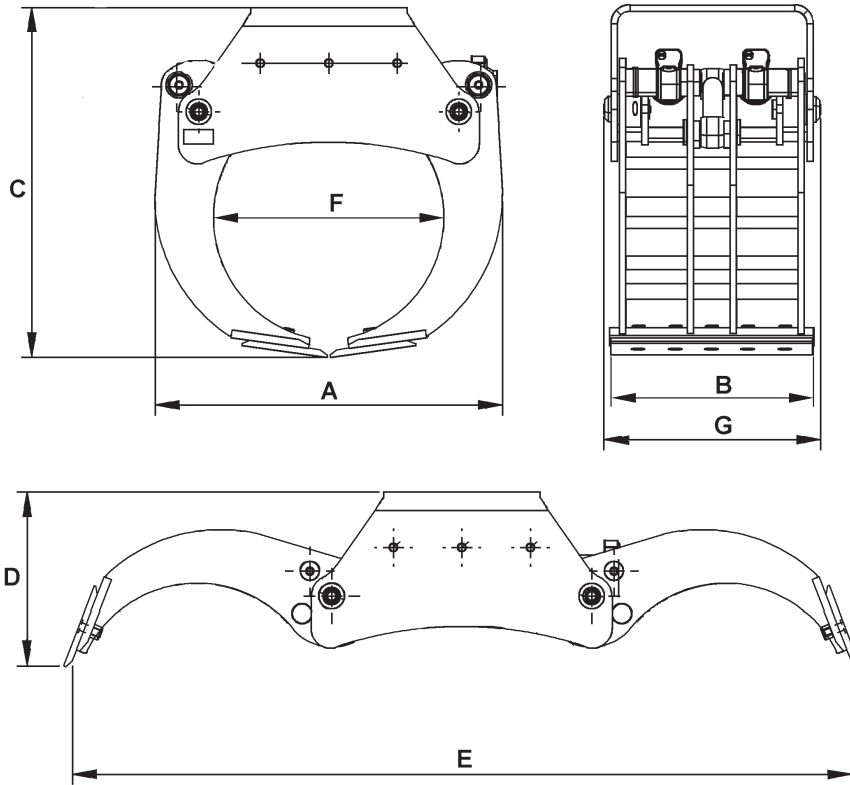
The durable sorting grapple is based on a proven design and is especially suitable for use in heavier applications such as handling rocks, sorting and demolition work.

The sorting grapple complements the smaller grapple module, which is used as a picking tool.

- Custom-built for Rototilt
- Proven design
- Rugged and hard-wearing
- Large replaceable wear plates
- Generous grip width
- Replacement mounting
- Easy to service

SORTING GRAPPLE

SG1600
SG2000
SG2300



Technical data

	SG1600	SG2000	SG2300
Weight, kg (lbs)	350 (772)	390 (860)	480 (1058)
Max. working pressure, MPa (psi)	25 (3 626)	25 (3 626)	25 (3 626)
Gripping force, tip-tip, kN (lbf)	17 (3 821)	16 (3 597)	16 (3 597)
Opening time at 70 l/min (18,5 USGPM), s	0,9	1,0	1,1
Closing time at 70 l/min (18,5 USGPM), s	1,5	1,7	1,9
Length, grapple closed, mm (inch) A	810 (31,9)	890 (35,0)	1010 (39,7)
Width, grapple arm, mm (inch) B	520 (20,5)	520 (20,5)	900 (35,5)
Height, grapple closed, mm (inch) C	805 (31,7)	880 (34,6)	970 (38,2)
Height, grapple open, mm (inch) D	545 (21,5)	420 (16,5)	480 (18,9)
Max. gripping width, mm (inch) E	1600 (63,0)	2000 (78,7)	2300 (90,6)
Min. gripping diameter, mm (inch) F	510 (20,1)	590 (23,2)	650 (25,6)
Max. width, mm (inch) G	550 (21,7)	550 (21,7)	550 (21,7)
Max. load, kg (lbs)	3500 (7 716)	5000 (11 023)	5000 (11 023)

Include accumulator and over centre valve.
Order attachment separate.